

NodeMCU baseboard

Docs for ASSY P/N

TS.101.01.00.PCBA

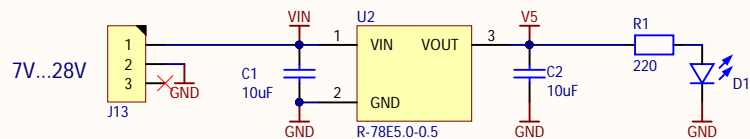
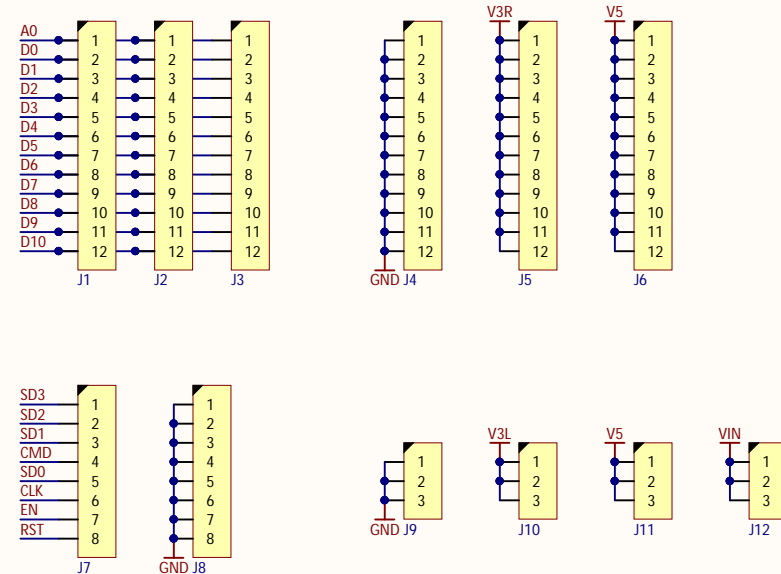
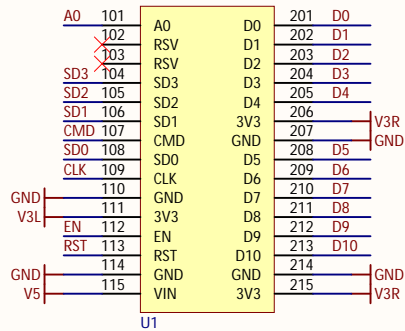
*** Revisions History ***

01.00
Initial version.

*

TS.101.01.00.SCHM p1_SchDoc	Drawn by BGs	Last modified 19.03.2018
Project: Test and dev tools	Engineer BGs	A4 Sheet 1 of 2

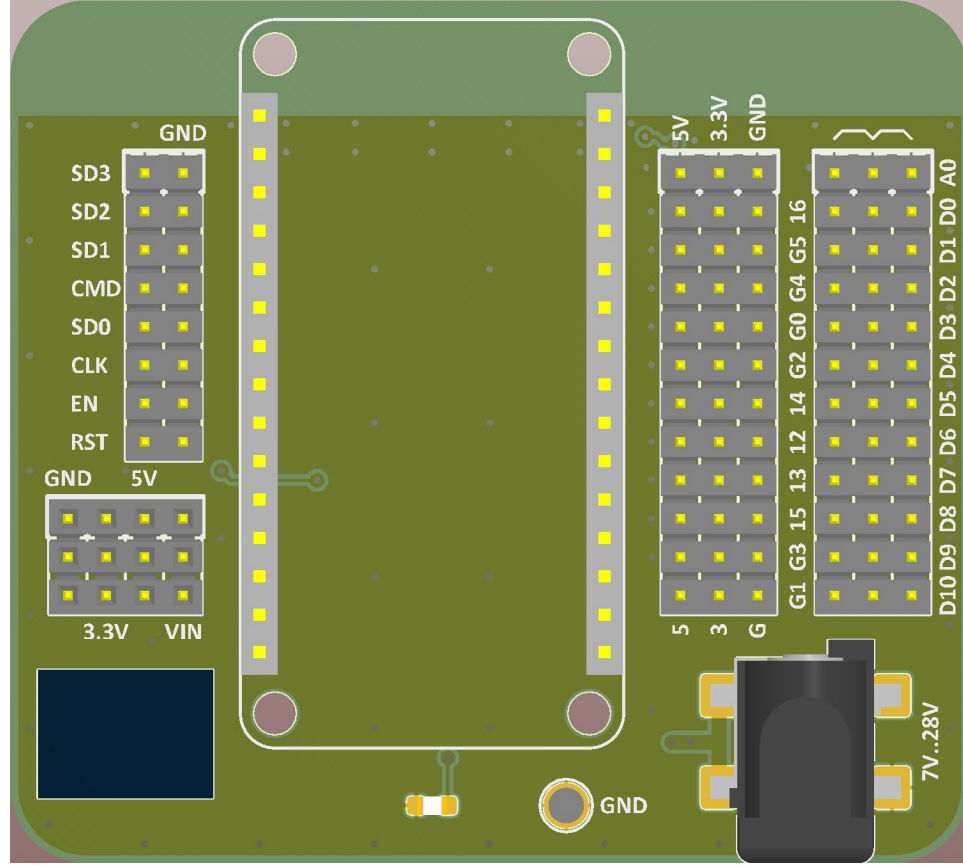
NodeMCU baseboard	TS.101.01.00.SCHM
-------------------	-------------------

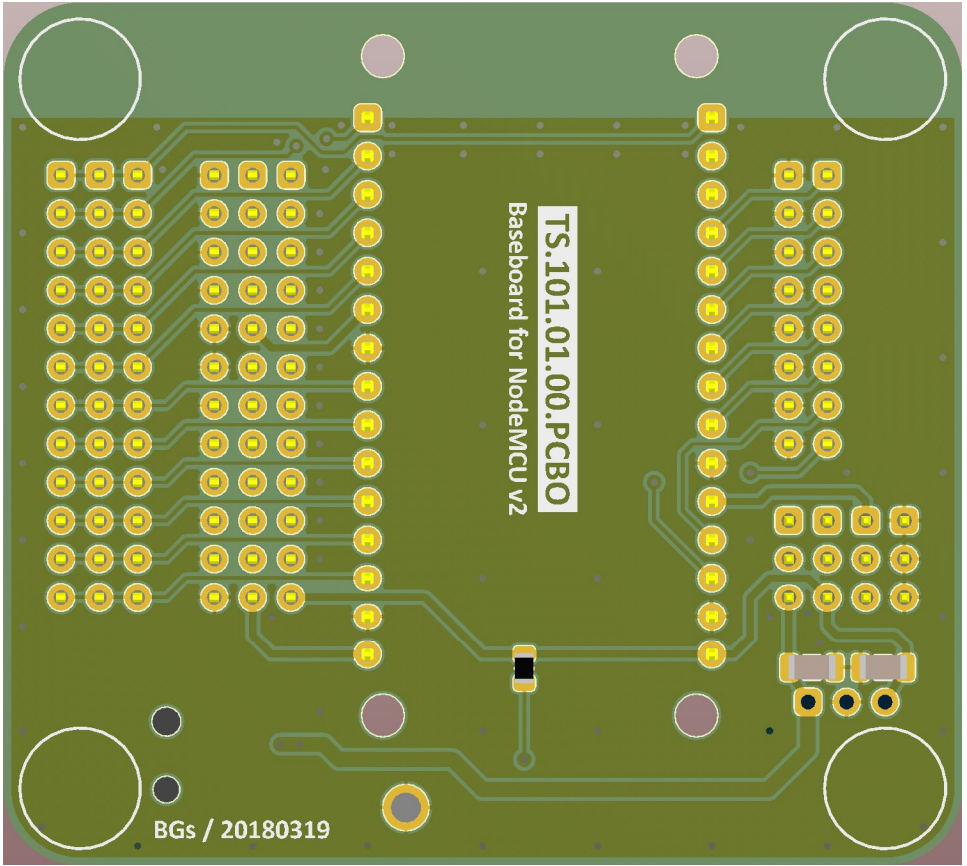


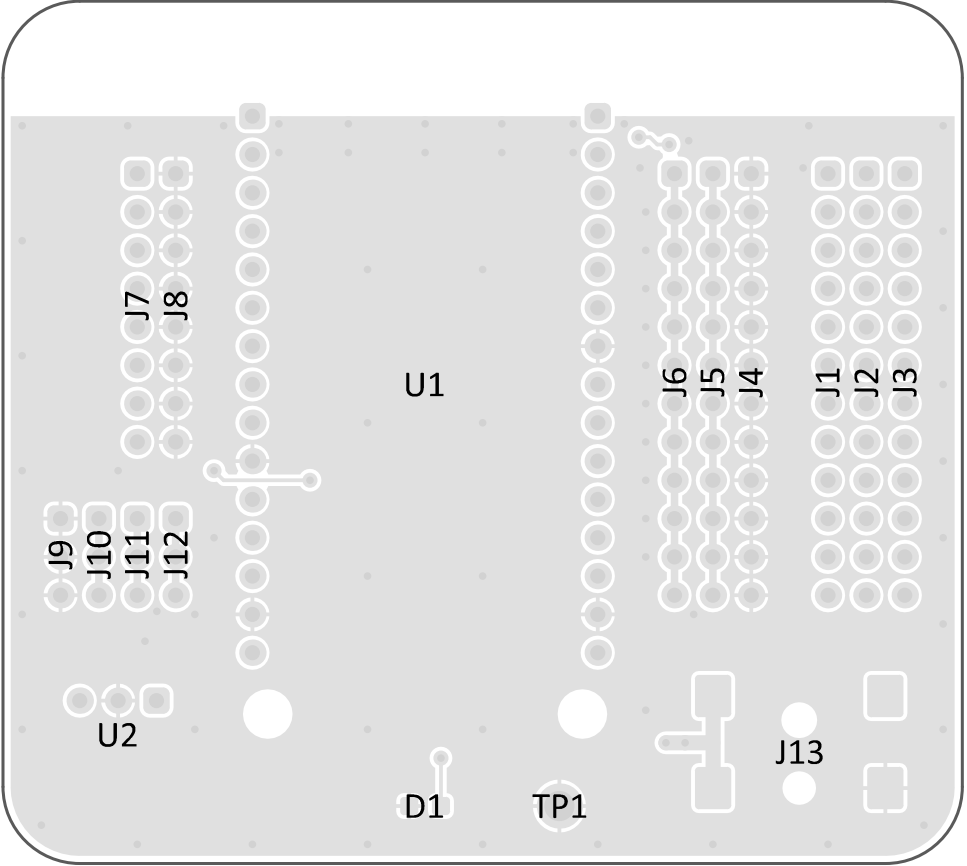
Bare PCB
P/N

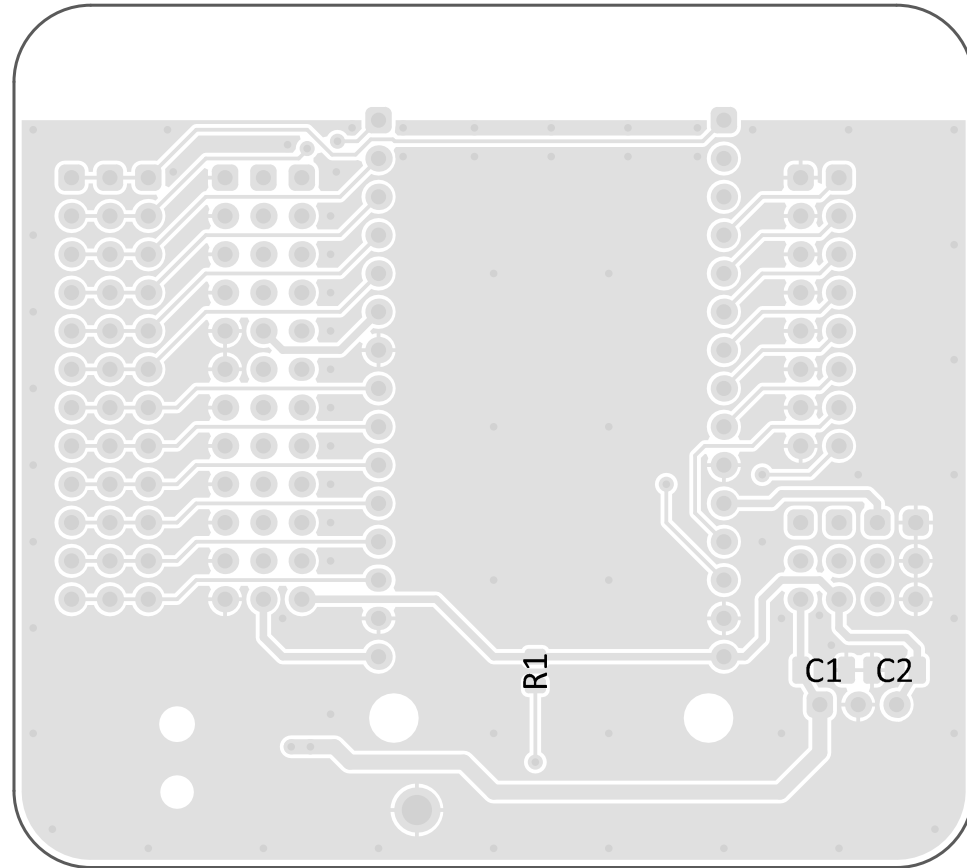
TS.101.01.00.PCBO
2-Layer, thickness 1.6mm

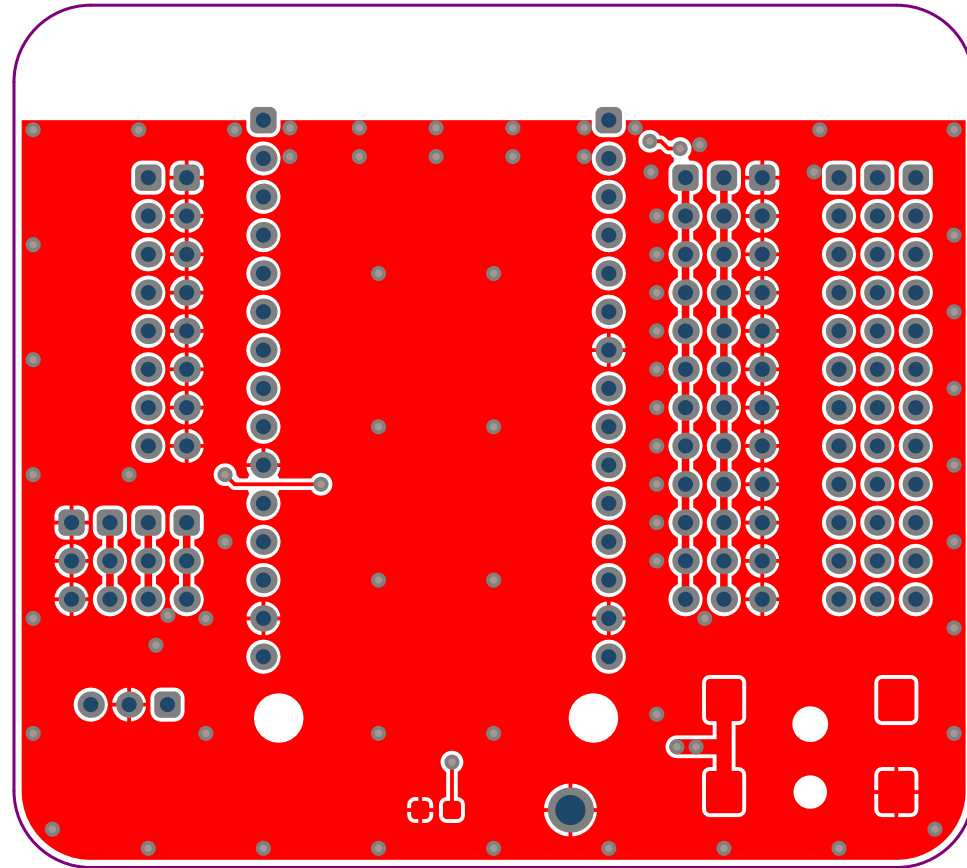
TS.101.01.00.SCHM p2.SchDoc		Drawn by BGs		Last modified 19.03.2018	
Project: Test and dev tools		Engineer BGs		A4	Sheet 2 of 2
NodeMCU baseboard			TS.101.01.00.SCHM		

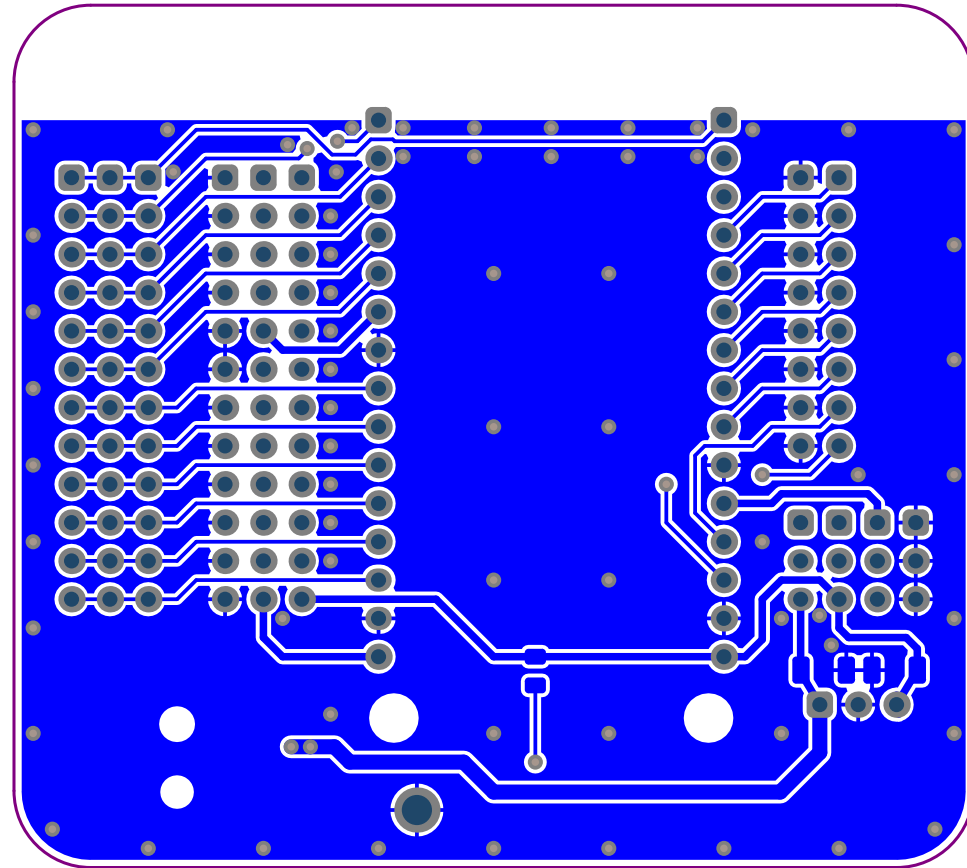


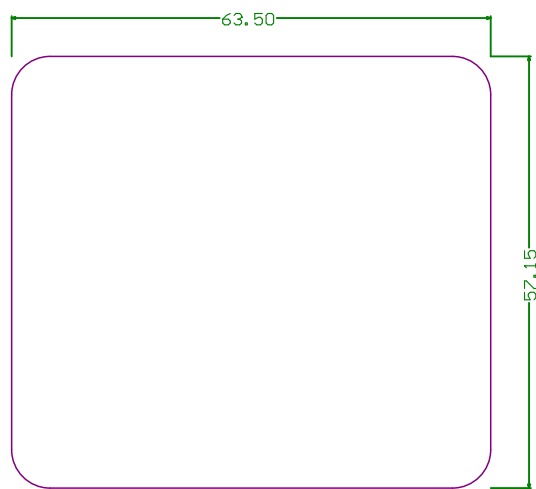












Manufacturing info :	
Layers	2
PCB thickness	1.6mm
Copper thickness	35μm
Tracks / Clearance	≥0.25mm
Finished holes	≥0.5mm
Silkscreen	Top/Bottom

BOM For TS.101 . 01 . 00 .PCBA

Altium Project: TS.101.01.00.PCBP.PrjPcb
Project: Test and dev tools
Variant: Production

Report Date: 19.03.2018 11:17:01

Note : only the components marked as "Fitted" must be assembled

#	Designator	Quantity	Fitted	Comment	Characteristics	Footprint	Manufacturer Part Number	Manufacturer	Description	Supplier 1	Supplier Part Number 1	Unit Price 1	Supplier 2	Supplier Part Number 2	Unit Price 2
1	*PCB*	1	Fitted	TS.101.01.00.PCBO	2-Layer, thickness 1.6mm				Bare PCB						
2	C1, C2	2	Fitted	10uF	Min 35V X5R 20%	CAPC1206_(3216M)_N			Capacitor						
3	D1	1	Fitted	Blue		LED0805	Blue	Chanzon	LED Blue	Aliexpress					
4	J1, J2, J3, J4, J5, J6	6	Fitted			HDR1X12_100			Connector						
5	J7, J8	2	Fitted			HDR1X8_100			Connector						
6	J9, J10, J11, J12	4	Fitted			HDR1X3_100			Connector						
7	J13	1	Fitted	PJ-002AH-SMT		CUI-PJ-002AH-SMT	PJ-002AH-SMT	CUI	Connector	Digi-Key	CP-002AHPJCT-ND		Aliexpress	DC-050	
8	R1	1	Fitted	220	1%	RESC0805_(2012M)_N			Resistor						
9	U1	1	Fitted	NodeMCU-V2		NODEMCUV2-SOCKET			Socket for NodeMCU V2						
10	U2	1	Fitted	R-78E5.0-0.5		RECOM-R78	R-78E5.0-0.5	RECOM	High Output Voltage DC/DC Converter	Digi-Key	945-1648-5-ND		Mouser	919-R-78E5.0-0.5	